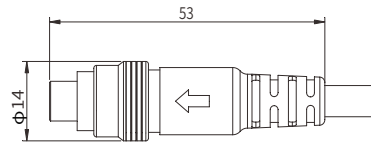


Q01 Straight Plug

- Connector series: Q01.0XX.02
- Contact: Male
- Locking type: Self-Locking
- Orientation type: Straight
- Part No.: Q01.0XX.02
- Mated with: Q03.0XX.01

Note: "X" refers to part number definition on page 121



General Information

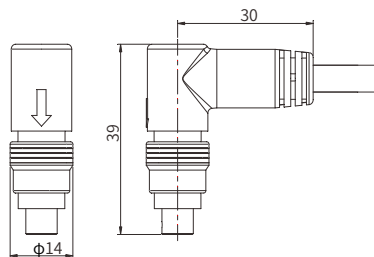
Ambient temperature:	-20°C ~ + 80°C
Endurance:	>10000 cycles
Insulator:	PEEK
Connector contacts:	Brass with gold plated
Out shell:	Brass with Black nickel plated

Insulator resistance:	≥100MΩ
IP rating:	IP 68
Shielding efficiency:	at 10MHz>75dB/at 1GHz>40dB
Salt spray corrosion test:	>96h

Q02 Angle Plug

- Connector series: Q02.0XX.02
- Contact: Male
- Locking type: Self-Locking
- Orientation type: Angle
- Part No.: Q02.0XX.02
- Mated with: Q03.0XX.01

Note: "X" refers to part number definition on page 121



General Information

Ambient temperature:	-20°C ~ + 80°C
Endurance:	>10000 cycles
Insulator:	PEEK
Connector contacts:	Brass with gold plated
Out shell:	Brass with Black nickel plated

Insulator resistance:	≥100MΩ
IP rating:	IP 68
Shielding efficiency:	at 10MHz>75dB/at 1GHz>40dB
Salt spray corrosion test:	>96h